

### President's message

Spring came early this year. All time average high for the month of March is 6.6°C but this year the average for March has reached 13.9°C. The highest temperature measured in Delhi's weather station was 27.3°C on March 22. Nature is reacting on these high temperatures as expected. Migrating birds have arrived earlier, shrubs start to flower, and insects are buzzing. When I saw the first honey bees flying I was wondering what would be available for them to eat. It turned out it was which hazel and American hazel. Ten days later and so much is flowering: willows, poplar trees and spice bushes. And before March has ended I have seen a Killdeer sitting on eggs. Unfortunately the average date for the last frost is on May 3. This has been a challenging spring for farmers who need to protect their crops.

On another note the weather was great to prepare for the management of our savanna. My husband Glen has been cutting poplars all winter when there was not too much snow. Except for January he has been out all winter bringing in 4 ft. poplar logs for the woodstove. The Savanna burn happened on March 28. Now the site is blackened and waiting for some spring showers. Until plants start to grow back Glen is burning left over branches. Cleaned up it makes management of poplar and sumac shoots later in the spring much easier.

In Norfolk County other restoration activities have taken place as well. I.e. a savanna burn has happened at Spooky Hollow. In April a Tree Planting Event took place on County Road 60, south of Walshingham. It was run by the Lions Club of Langton and Nature Conservancy Canada. 10,000 trees were be planted. It was a family event where all interested, including parents or grandparents with their children, were invited to come out and help put the trees in the ground. This event connected with Earth Day, where people all over the world show their appreciation for the earth. Unfortunately there was some who did not appreciate all this hard work....you can read more about this in this newsletter.

If you have any suggestions or interests that you would like to learn about you can let me know by phone (519-428-1421) or by email ([vankleef@kwic.com](mailto:vankleef@kwic.com))

Angelle van Kleef

## WATER YOUR NEWLY PLANTED TREES!!

Trees need water especially newly planted trees.

Standing with a hose for a few minutes does not  
provide enough water.... so

take a 10 gal. pail, drill on the bottom side a few small holes  
with a fine drill bit. Fill weekly.

# UPCOMING EVENTS

## CANADA'S LARGEST HORTICULTURE TRADE SHOW

Canada's Fruit & Vegetable  
Tech X-CHANGE

July 12, 13 & 14<sup>th</sup>, 2012

Thursday & Friday 10:00am – 6:00pm

Saturday 10:00am – 4:00pm

See attached flyer and COUPON



Forest Fest



# Forest Fest

# Grand Family Picnic



www.forestryfarm.ca



## Sunday, August 12th 10 am to 4 pm

Canada's First Forestry Station - St. Williams Interpretive Centre  
885 Highway #24, St. Williams

**Pack a lunch; bring a chair; come experience an old fashioned picnic.**

We will feature activities that commemorate the  
**200th Anniversary of the War of 1812.**



Meet Sir Isaac Brock  
Watch Retriever Demonstrations  
Ride in a Horse Drawn Wagon  
Learn How to Measure a Tree  
Tour our Forest Trails

Have Fun in our Children's Activities Area  
Visit Vendor Displays

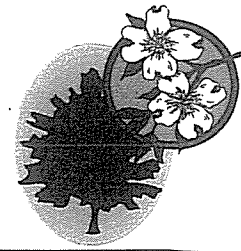
**Fun for all ages.**



Sponsored by: **Port Rowan/South Walsingham Heritage Association**  
Donations to the maintenance of the Interpretive Centre appreciated.

# NWOA Directors – 2012

\* year indicates the term the year expires, the (number) indicates the number of terms served



Name	Position	Term *	Phone	E-mail
Dolf Wynia	Past President		875-3350	<a href="mailto:wynia@kwic.com">wynia@kwic.com</a>
Angelle van Kleef	President	2013 (1)	428-1421	<a href="mailto:vankleef@kwic.com">vankleef@kwic.com</a>
Clen van Kleef	Vice President	2013 (1)	428-1421	<a href="mailto:vankleef@kwic.com">vankleef@kwic.com</a>
Eric Ferguson	Treasurer	2014 (2)	443-7928	<a href="mailto:emferguson@silomail.com">emferguson@silomail.com</a>
Martin Perrin	Secretary Website Ctte	2015 (2)	875-2481	<a href="mailto:mkperrin@kwic.com">mkperrin@kwic.com</a>
Mike Rothery	Director	2014 (2)	586-9535	<a href="mailto:wmrothery@hotmail.com">wmrothery@hotmail.com</a>
Vic Janulis	Director	2013 (1)	443-5828	<a href="mailto:vicj@kwic.com">vicj@kwic.com</a>
Joe Stechly	Director	2013 (1)	428-0374	
Tom Bradstreet	Director	2013 (1)	426-3405	<a href="mailto:tom.bradstreet@natureconservancy.ca">tom.bradstreet@natureconservancy.ca</a>
Ron Tchorek	Director	2013 (2)	426-5708	<a href="mailto:tchorek@kwic.com">tchorek@kwic.com</a>
Brett Schuyler	Director	2014 (1)	427-9696	<a href="mailto:brett@schuylerfarms.ca">brett@schuylerfarms.ca</a>
Paul DeCloet	Director-at-large	2014 (1)	688-0309	<a href="mailto:p.decloet@bell.net">p.decloet@bell.net</a>
John Morrissey	Director-at-large	2014 (1)		<a href="mailto:drjohn@xplornet.com">drjohn@xplornet.com</a>
Garret Reid	Director-at-large	2014 (2)	429-9288	<a href="mailto:garretreid42@hotmail.com">garretreid42@hotmail.com</a>
Gunther Csoff	Director-at-large	2014 (1)		<a href="mailto:gandhcsoff@execulink.com">gandhcsoff@execulink.com</a>
David Reid	Director-at-large	2015 (1)		<a href="mailto:dave.reid@eastlink.ca">dave.reid@eastlink.ca</a>
Mark Sommerville	St. Williams Conservation Reserve Community Council	Advisory	426-3762	<a href="mailto:markruth@flarenet.com">markruth@flarenet.com</a>
Tracey Boerkamp	Annual General Meeting Chairman	Advisory	443-8754	<a href="mailto:springview@simcom.on.ca">springview@simcom.on.ca</a>
Eric Cleland	Norfolk Land Stewardship Council	Advisor	426-4259	<a href="mailto:eric.cleland@ontario.ca">eric.cleland@ontario.ca</a>
Steve Scheers Superintendent	Norfolk County Forestry Conservation Service	Advisor	426-5999	<a href="mailto:steven.scheers@norfolkcounty.ca">steven.scheers@norfolkcounty.ca</a>

## FOREST FUNNIES

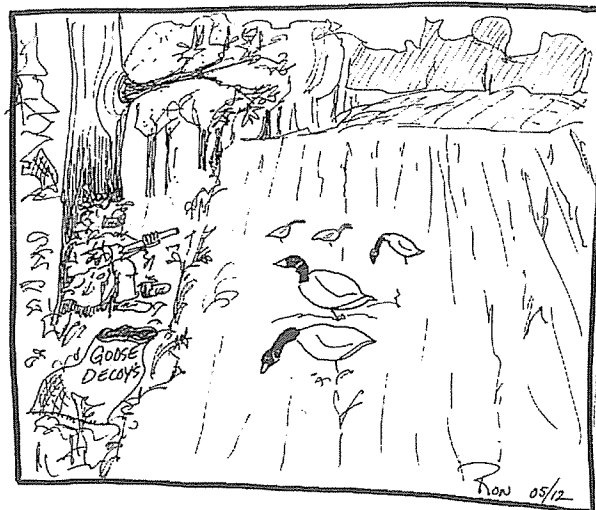
### US FOREST SERVICE

These are actual comments left on U.S. Forest Service registration sheets and comment cards by backpackers completing wilderness camping trips. I thought they were too funny not to pass on.

**"Trails need to be reconstructed. Please avoid building trails that go uphill."**

**"Too many bugs and leeches and spiders and spider webs. Please spray the wilderness to rid the area of these pests."**

**"The places where trails do not exist are not well marked."**



"As the sun began to rise, Dave knew he was going to have a poor TURKEY hunt that day!"



## WOODN'T YOU LIKE TO KNOW.....

### Q. I'd like to know more about Species at Risk in Norfolk.

The Norfolk Woodlot Owners Association just received a package from the Ontario Ministry of Natural Resources regarding habitat regulations which have been finalized for the following species under the *Endangered Species Act, 2007* (ESA) which came in to force on July 1, 2012:

- |  |   |
|--|---|
| 1. Bent Spike-rush                                 | - found within Norfolk<br>- Walsingham area, Long-Point Peninsula     |
| 2. Gray Ratsnake (Carolinian population)           | - found in Norfolk  |
| 3. Eastern Foxsnake (Carolinian population)        | - found in Norfolk  |
| 4. Common Five-lined Skink (Carolinian population) | - not found in Norfolk but found in Haldimand, Chatham-Kent and Elgin |
| 5. Rapids Clubtail                                 | - not found in Norfolk - but found in Oxford                          |
| 6. Gray Ratsnake (Frontenac Axis population)       | - not found in Norfolk  |
| 7. Eastern Foxsnake (Georgian Bay population)      | - not found in Norfolk  |
| 8. Pale-bellied Frost lichen                       | - not found in Norfolk  |
| 9. Virginia Mallow                                 | - not found in Norfolk  |
| 10. Northern Barrens Tiger Beetle                  | - not found in Norfolk  |
| 11. American White Pelican                         | - not found in Norfolk  |

These species, plus 200 others in Ontario are considered "at risk" of disappearing from the province because of habitat loss, pollution, competition from invasive species, disease, climate change and over harvesting. The loss of a single species can have an effect on the entire ecosystem. A habitat regulation is a valuable tool under the ESA which describes an area and its specific features that will be protected to ensure that Ontario can meet its commitments to protect and recover the species.

The NWOA will include fact sheets in upcoming newsletters and post on the website those species identified as calling Norfolk County their home. In addition we have attached a fact sheet describing how Ontario protects habitat for species at risk.

### Our thoughts and prayers go out to the Boterberg Family....

***BOTERBERG, Edward Anthony (December 26, 1953 - June 18, 2012)*** - passed away suddenly at the Tillsonburg District Memorial Hospital on Monday, June 18th, 2012 in his 59th year. Beloved husband of Neda Boterberg (nee Long) of Walsingham. Loving father and grandfather of the late Jason Boterberg (2004), his son Brayden; Justin Boterberg of Simcoe, his children Jayden and Stella; and Jeff Ward (Kelly Spencer) of Tillsonburg, their children Liam & Megan. Ed will be lovingly remembered by his sisters Janette Hagarty (Bob) of Simcoe, Linda Hill (Gord) of Tillsonburg, Karen Verspeeten-Pawley (Dave) of Kamloops, BC and Brenda Hunt (Bruce Wentzell) of Simcoe. Ed is also survived by many nieces, nephews and extended family. Those wishing to donate in Ed's memory are asked to consider the Parkwood Hospital, London.



Ed was a well respected member of the Norfolk Woodlot Owners Association and member of our forest industry. A tree planting ceremony will occur next spring in honour of Ed's support in Forest Conservation.

# Protecting Species at Risk Habitat Under the Endangered Species Act

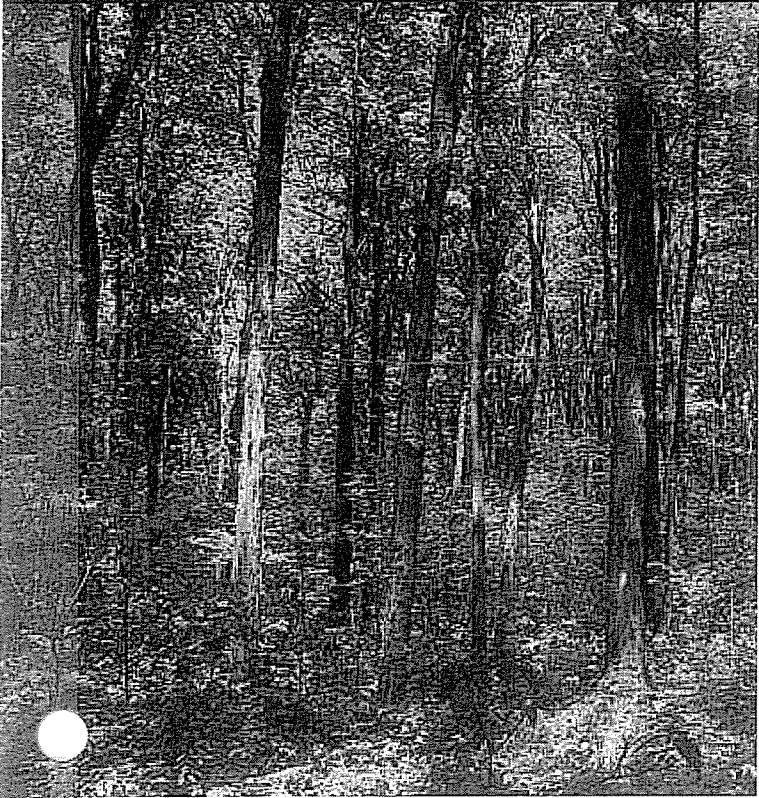


Photo: Joe Crowley

## Why is Habitat Protected under the Endangered Species Act?

More than 200 species in Ontario are considered at risk of disappearing from the province. There are many causes including habitat loss, pollution, competition from invasive species, climate change and poaching.

The Endangered Species Act provides protection for species at risk and their habitats. It's not enough to protect only the species. Protecting their homes, the land, water and other areas they use, is key to their survival.

Habitat plays an important role in supporting the life processes of species at risk such as hibernating, finding food or reproducing. Part of protecting habitat means preserving these functions and ensuring the habitat remains useful for species at risk.

## What is Protected Habitat?

Through the act, the habitat of endangered and threatened species is protected either through general or regulated habitat. When species are listed as endangered or threatened, their general habitat is automatically, and immediately, protected. General habitat includes areas on which a species depends to carry out its life processes.

A habitat regulation (which is a legal requirement of the act) protects habitat by providing a more precise description of habitat for a species at risk. It describes areas and features such as a creek, cliff face, or beach, geographic boundaries such as a region or other specific characteristics such as water quality or special food sources.

The Endangered Species Act protects species at risk habitat by prohibiting anyone from damaging or destroying it. Damage occurs when the function or usefulness of habitat for the species is impaired. Destruction occurs when that function is eliminated.

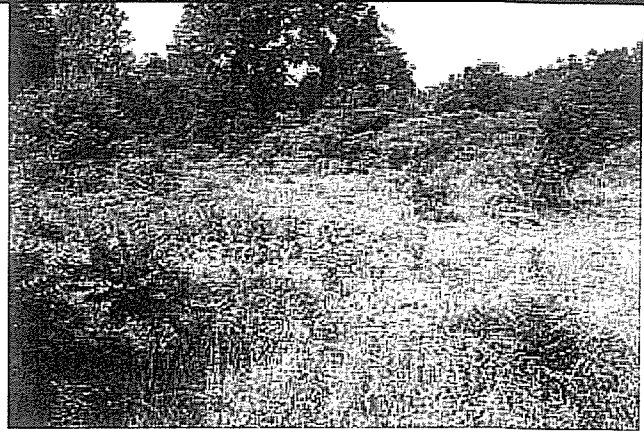
Protected habitat is not a "no-go" zone for all human activities or actions. Activities can take place in protected habitat as long as the activity does not damage or destroy that habitat.



## How is Protected Habitat Categorized?

Recognizing that some habitat areas and features are more important to supporting life processes, the Ministry of Natural Resources categorizes habitat by considering how a species uses its habitat and how much activity or change can occur within the habitat.

The Categorizing and Protecting Habitat policy separates habitat into the following categories:



### Category 1 (Red):

Habitat areas with the lowest tolerance to alteration before their usefulness to the species is compromised. E.g., nesting and hibernation sites.

### Category 2 (Orange):

Habitat areas with a moderate tolerance to alteration before their usefulness to the species is compromised. E.g., areas used daily to find food.

### Category 3 (Yellow):

Habitat areas with the highest tolerance to alteration before their usefulness to the species is compromised. E.g., areas used occasionally to find food.



## What Does Habitat Protection Mean to Me?

The Endangered Species Act applies to everyone – individuals, businesses, conservation authorities, municipal governments and the provincial government. It provides tools that help us protect and recover species at risk and their habitats.

Not every activity that occurs within or near protected habitat will damage or destroy that habitat. In fact, many day-to-day activities can take place without affecting habitat. Activities that do not damage or destroy habitat can proceed without any approvals (such as a permit) from the ministry.

To determine if an activity might damage or destroy species at risk habitat, the ministry considers three things:

- the details of the activity,
- which categories of the habitat will be affected by the activity, and
- how the activity might affect that species' ability to use that habitat.

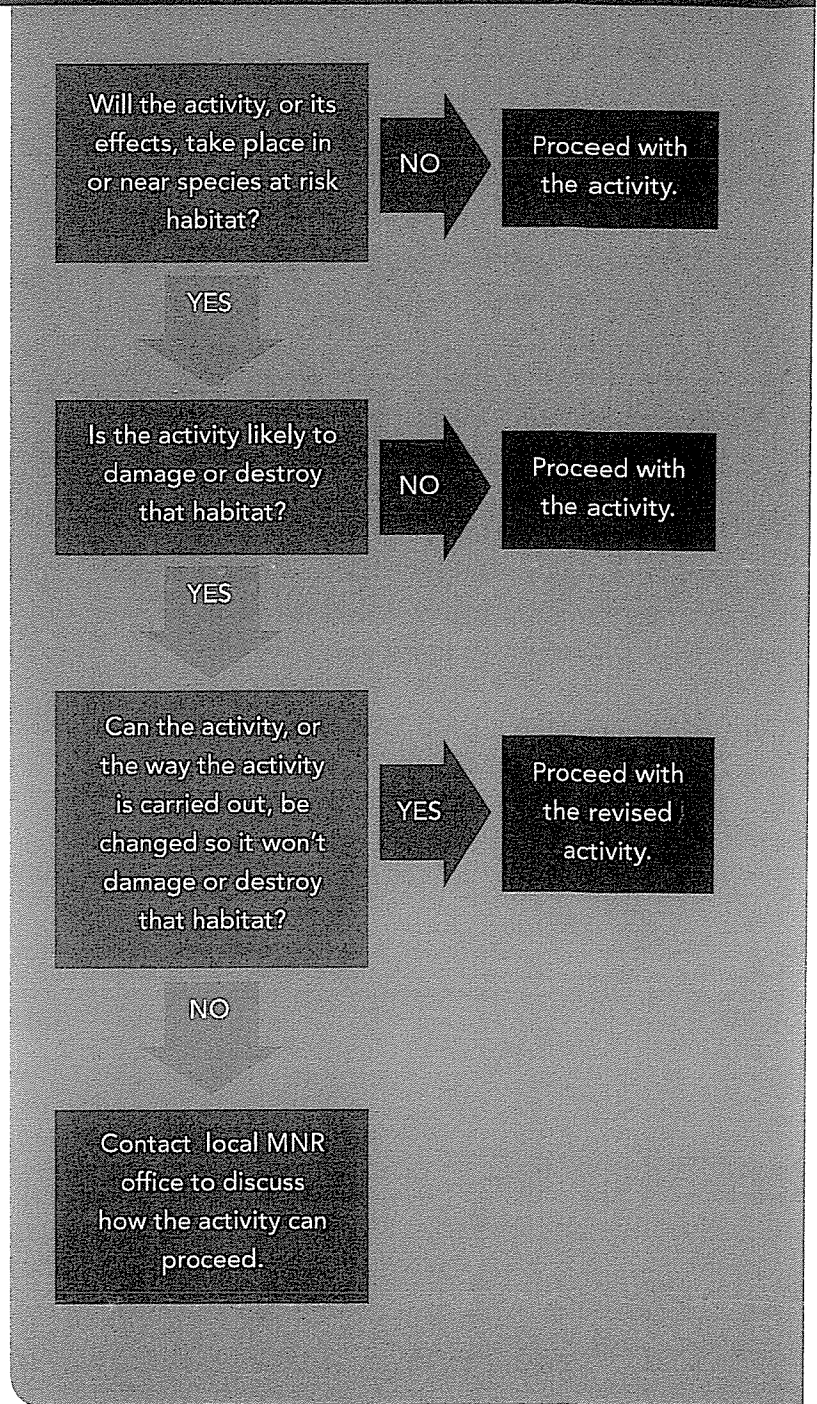
If your activity is likely to damage or destroy the habitat of endangered and threatened species in Ontario, it may require an authorization (permit) from the ministry to proceed unless you modify your activity to avoid impacts to species at risk.

For example, you might be able to avoid damaging or destroying habitat by:

- conducting your activity outside of the active season, or,
- changing the location of your activity, or
- adjusting the way the activity is carried out.

The diagram to the right shows when a permit under the Endangered Species Act may be needed.

Contact your local ministry office if you are uncertain whether your activity is likely to damage or destroy habitat. We recommend that you contact the ministry early in the planning process.



We welcome public comments on draft habitat regulations through Ontario's Environmental Registry. [ontario.ca/ebr](http://ontario.ca/ebr)

To find out which species currently have habitat regulations and which ones are in development, please visit [ontario.ca/speciesatrisk](http://ontario.ca/speciesatrisk).



## What Can I Do to Help Species at Risk and their Habitat?

As a landowner with species at risk habitat on your property you may be eligible for funding programs that support stewardship activities to help protect and recover species at risk, such as the Species at Risk Stewardship Fund or the Species at Risk Farm Incentive Program. You can find out more about these programs by visiting [ontario.ca/speciesatrisk](http://ontario.ca/speciesatrisk) or getting in touch with your local ministry office.

### For additional information:

[ontario.ca/speciesatrisk](http://ontario.ca/speciesatrisk)



Find out about financial incentive programs to assist with stewardship activities for species at risk.  
[ontario.ca/mnrstewardship](http://ontario.ca/mnrstewardship)

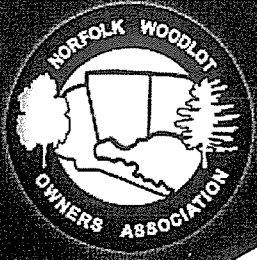


Photos: Joe Crowley

MNR # 62790  
© Queen's Printer for Ontario, 2012  
ISBN 978-1-4435-9645-9

Cette publication est également disponible en français





# INVITES YOU TO...

# Canada's Fruit & Veg Tech X-Change

## JULY 12, 13, 14 2012

### 1195 Front Rd., St. Williams, ON

#### WOODLOT XPO

Stop by the Norfolk Woodlot Owners Association booth, located in the Woodlot XPO!



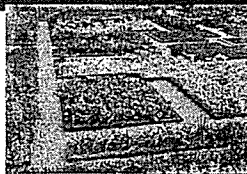
#### FREE BRUNCH!

Free Brunch on Opening Day. Producers will have a unique chance to connect with elite buyers from Canada and the US, while receiving a complimentary brunch. THURSDAY ONLY



#### ONTARIO'S GARDEN PLOT

The 2-acre Ontario's Garden Plot will focus on new crop/variety trials, water conservation, live planting and tillage demos. Visit leading seed suppliers.



#### THE WEALTHY BARBER

Canadian icon! Hear David Chilton's message on financial planning, as it relates to agriculture. SATURDAY ONLY



## Canada's Fruit & Veg Tech X-Change

July 12, 13, 14 2012

### \$5.00 OFF ADMISSION COUPON

Compliments of:



### NORFOLK WOODLOT OWNERS ASSOCIATION

[www.norfolkwoodlots.com](http://www.norfolkwoodlots.com)

1195 Front Rd., St. Williams ON N0E 1P0  
P: 226.381.0282 | [info@fruitveg.ca](mailto:info@fruitveg.ca) | [FruitVeg.ca](http://FruitVeg.ca)

One time use only, valid through July 12, 13, 14 2012.  
Adult admission and day time programming only.  
Adult admission is \$12 with this coupon.

226.381.0282 | [INFO@FRUITVEG.CA](mailto:INFO@FRUITVEG.CA)

# FRUITVEG.CA



# CANADIAN LOGGERS

A new TV show is being filmed in the Cochrane, Ontario area.

The show, titled "DC Loggers", follows the daily activities of Genier Brothers Trucking.

The premise of the series is the Genier Brothers diversification into new wood products and showcasing their expertise in cold weather forestry research, while celebrating the greatest way of life in the best backyard on the planet.

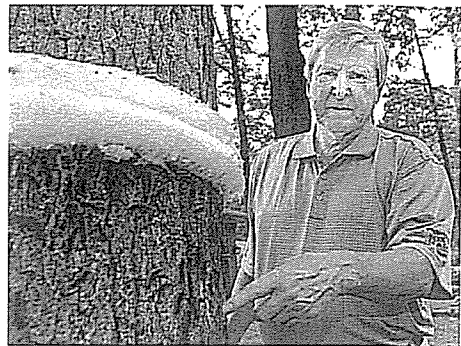
Genier Bros. Trucking Ltd. is comprised of four brothers, a sister and their mother - JP Genier, Joel Genier, Marc Genier, Richard Genier, Sylvie Janson and their mother Lise Genier.

---

## Gypsy Moth caterpillar infestation blankets Etobicoke Neighbourhood

Caterpillars are covering everything. They block the windows, coat the driveway, stain the deck and eat the trees. Thousands and thousands of Gypsy Moth caterpillars have been swarming pockets of Etobicoke and the City of Toronto is helpless to combat them.

It isn't the first time this area had problems with the invasive Gypsy Moth and the only really effective way to deal with them is preventative spraying. The entire area received a massive aerial spraying with bacteria called *Bacillus Thuringiensis Kurstaki* (BTK) in 2007 and 2008 but this strategy is only effective in killing the caterpillars directly after they hatch.



IF YOU HAVE SEEN GYPSY MOTH THIS SPRING or SUMMER **PLEASE CALL** THE NORFOLK FOREST CONSERVATION SERVICE AT 519-426-5999 ext 2224.

---

Canada's Fruit & Vegetable  
Tech X-CHANGE

VISIT

[www.fruitveg.ca](http://www.fruitveg.ca)

rogram Guide: <http://www.mydigitalpublication.com/publication/?i=116971>