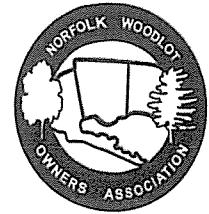


NORFOLK WOODLOT OWNERS ASSOCIATION NEWSLETTER  
www.norfolkwoodlots.com



Volume 2 Edition 16

Winter 2012

### President's message

It was a pleasure seeing so many of you attend to our Annual General Meeting on February 1. The weather was very cooperative this year & over 200 members came out. We all enjoyed the exhibits of everything wood & nature from Norfolk County. Every year it amazes me how much information is available & how many people are involved in so many different organizations. A great THANK YOU to all who put so much effort in this annual event.

A question has come up a few times about the current lumber & firewood market. Although I am only sideways informed I know that the market for wood is under a lot of pressure. There are several reasons for this. The first reason is the slow down on the housing market both in the US & in Canada. Due to the economic down turn there are many houses for sale, often for lower than usual prices. Therefore the building of new houses has slowed down dramatically. This means less demand for new construction wood, less demand for finished products & less demand for new furniture. The second reason is that our Canadian dollar is at par with the US dollar. This means that there is hardly any export from Canada to the US because our timber has gone up in price by 25%. On the contrary, US & other timber may even be imported into Canada. The market for firewood still stands, but this winter has been mild & I can only imagine that even the demand for firewood has dropped.

Due to the current weather maple trees have started to produce sap quite early this year. Although it is still around freezing most days, sap has started running on warmer days. Other trees start to swell their buds as well, such as the Silver Maples & Weeping Willow in our front yard. The Black Oaks however are still wearing their winter leaves. For them the temperature needs to rise quite a bit higher to start shedding. That usually happens in March. We still have to be patient a little longer for spring to arrive.

In the newsletters I have been writing about our Forest Management Plan & some progress we have made on our farm. To make our plan we have used the **GUIDE TO STEWARDSHIP PLANNING FOR NATURAL AREAS** from the Ministry of Natural Resources. This information has made us look at our forest in a different way. We had to look at its history & surrounding areas, but most important it made us think about our landowner objectives. What do we feel is important & why; do we want environmental protection, do we want to produce forest products, do we see it as an investment, do we use it for recreation, do we want to provide habitat for wildlife, do we appreciate nature or do we still have other objectives. The plan made us aware of what is actually in our forest. Finally the plan asks for activities we plan to do to improve our forest & obtain our objectives.

This booklet has been reprinted this January & is available in printing at the County Office on 95 Culver Street in Simcoe. It is also available on line:

[http://www.mnr.gov.on.ca/stdprodconsume/groups/lr/@mnr/@forests/documents/document/mnr\\_e000231.pdf](http://www.mnr.gov.on.ca/stdprodconsume/groups/lr/@mnr/@forests/documents/document/mnr_e000231.pdf)

It contains a section with pull out forms that are easy to use & very informative:

[http://www.mnr.gov.on.ca/stdprodconsume/groups/lr/@mnr/@forests/documents/document/mnr\\_e000232.pdf](http://www.mnr.gov.on.ca/stdprodconsume/groups/lr/@mnr/@forests/documents/document/mnr_e000232.pdf)

I want to encourage you to look into this information to learn about the potential of your woodlots.

If you have any suggestions or interests that you would like to learn about you can let me know by phone (519-428-1421) or by email ([vankleef@kwic.com](mailto:vankleef@kwic.com))

Angelle van Kleef

## UPCOMING EVENTS

**Saturday March 24<sup>th</sup>, 2012 10 AM**

### **Walk in the Woods of Paul De Cloet**

**Location:** Lots 3 and 4, Concession 6 in the former twp. of Houghton,  
911 number is 401 Con 5 Houghton

Property is located 1 mile south of Cultus on Concession 5 & corner of Graves Side Road.

It consists of 155 acres of rolling land with Clear Creek running through it. It consists of two parts. The first 58 acres was purchased in 1980 and the second 97 acres in year 2000.

The dominant species is sugar maple. There are 80 tulip trees mostly at the back east end and difficult to access, but there are some single stems on the west side, harvesting around these trees has been beneficial for tulip tree regeneration. The same in another area for sassafras trees regeneration.

Paul will explain the history and the management of the forests. Please join Paul and Josiane De Cloet for an enjoyable walk in the woods.

Please wear appropriate footwear and dress for the weather.

For more information please contact Paul DeCloet at 519-688-0389 or email [p.decloet@hotmail.com](mailto:p.decloet@hotmail.com).

---

**Saturday March 31<sup>st</sup>, 2012 10 AM**

### **Tree Planting Workshop and Nursery Tour with Paul-Britman Rapai, Fox Hollow Farms**

**Location:** North Walsingham – Concession Rd 8 – west of Jericho – 911 # 1545

Learn more about how to plant tree seedlings – bareroot and plugs. Discuss local opportunities to purchase and plant larger native trees successfully. Review opportunity to access for free from the LPRCA and NLSC a tree planting machine for larger plantings. And take a nursery tour with the owners of Fox Hollow Farms!

Please wear appropriate footwear and dress for the weather.

For information please contact Adam Biddle at 519-426-5999 x 2224 or email [adam.biddle@norfolkcounty.ca](mailto:adam.biddle@norfolkcounty.ca)

---

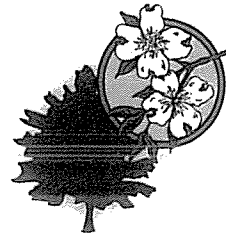
### **TREES FOR ROADS – Eastern Flowering Dogwood**

Norfolk County and Fox Hollow Farms have partnered to make available to Norfolk Woodlot Owner Association members a **free Eastern Flowering Dogwood**.

Trees are approximately 3 feet tall. They will need to be planted in an open setting and visible from the road. You will be adopting these trees and need to care for them – including watering and protecting from damage from animals and weed eaters/lawn mowers.

**Limit two trees per property** – limited number of trees are available and will be distributed based on a first come, first serve basis. A site visit will also be undertaken to ensure that your proposed site is suitable for an Eastern Flowering Dogwood.

Please complete the application attached and check the box at the bottom of the application indicating NWOA membership. Return to Norfolk County address on the attached form for processing.



## NWOA Directors – 2012 \* year indicates the term the year expires, the (number) indicates the number of terms served

<b>Name</b>	<b>Position</b>	<b>Term *</b>	<b>Phone</b>	<b>E-mail</b>
Dolf Wynia	Past President		875-3350	wynia@kwic.com
Angelle van Kleef	President	2013 (1)	428-1421	vankleef@kwic.com
Clen van Kleef	Vice President	2013 (1)	428-1421	vankleef@kwic.com
Eric Ferguson	Treasurer	2014 (2)	443-7928	emferguson@silomail.com
Martin Perrin	Secretary Website Ctte	2015 (2)	875-2481	mkperrin@kwic.com
Mike Rothery	Director	2014 (2)	586-9535	wmrothery@hotmail.com
Vic Janulis	Director	2013 (1)	443-5828	vicj@kwic.com
Joe Stechly	Director	2013 (1)	428-0374	
Tom Bradstreet	Director	2013 (1)	426-3405	tom.bradstreet@natureconservancy.ca
Ron Tchorek	Director	2013 (2)	426-5708	tchorek@kwic.com
Brett Schuyler	Director	2014 (1)	427-9696	brett@schuylerfarms.ca
Paul DeCloet	Director-at-large	2014 (1)	688-0309	p.decloet@bell.net
John Morrissey	Director-at-large	2014 (1)		drjohn@xplornet.com
Garret Reid	Director-at-large	2014 (2)	429-9288	garretreid42@hotmail.com
Gunther Csoff	Director-at-large	2014 (1)		gandhcsoff@execulink.com
David Reid	Director-at-large	2015 (1)		dave.reid@eastlink.ca
Mark Sommerville	St. Williams Conservation Reserve Community Council	Advisory	426-3762	markruth@flarenet.com
Tracey Boerkamp	Annual General Meeting Chairman	Advisory	443-8754	springview@simcom.on.ca
Eric Cleland	Norfolk Land Stewardship Council	Advisor	426-4259	eric.cleland@ontario.ca
Steve Scheers Superintendent	Norfolk County Forestry Conservation Service	Advisor	426-5999	steven.scheers@norfolkcounty.ca

## FUTURE EVENTS ~ More info in the next newsletter

**Saturday April 21<sup>st</sup>, 2012 Time: TBA**

**Tree Planting Event** with the Nature Conservancy of Canada and Lions clubs of District A-2 (Sponsoring Club ~ Langton)

**Location:** 911# 853 – 855 County Road 60 – South Walsingham (west of the Busy Bee Gas Station)

**Tuesday May 1<sup>st</sup>, 2012 Time: 7 PM**

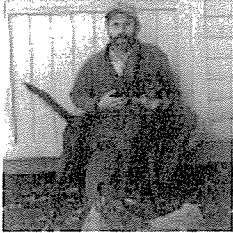
**Evening Seminar on Wildlife Habitat  
with Andrew Weiks, Wildlife Biologist, Ruffed Grouse Society**

**Location:** Courtland Community Centre – Hwy #3 911 # 272 Main Street, Courtland

# Wildlife Habitat Seminar

**Tuesday May 1<sup>st</sup>, 2012 – Courtland Community Centre**

Guest Speaker Bio: **Andrew Weik**  
New England Wildlife Biologist, Ruffed Grouse Society



Andrew Weik is responsible for implementing Ruffed Grouse Society's (RGS) on-the-ground forest management and landowner and land manager education programs in Connecticut, Maine, Massachusetts, New Hampshire, New York, Rhode Island and Vermont.

A New England native Weik, 45, has been employed with the U.S. Fish and Wildlife Service's (USFWS) Northeast Region at Moosehorn National Wildlife Refuge – the only National Wildlife Refuge dedicated to woodcock management. He serves as technical expert in USFWS Region 5 on early successional forest habitat management and its impact on American woodcock population dynamics.

In addition to providing technical training regarding forest management techniques that benefit wildlife to public and private resource professionals and landowners at workshops and meetings, Andrew was responsible for developing the Refuge's Habitat Management Plan, Annual Habitat Work Plan, and assisting with the development of the Comprehensive Conservation Plan which will guide refuge programs for the next 15 years.

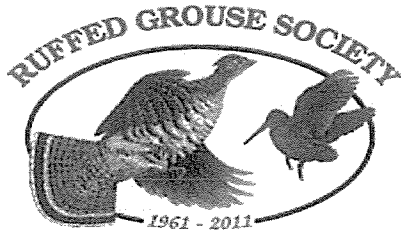
Prior to working with the USFWS, Weik was the Waterfowl and Upland Game Bird Program Leader for the Maine Department of Inland Fisheries & Wildlife where, among other projects, he coordinated the development and implementation of programs and surveys to assess the status of game birds.

Married with two sons, Nolan (5) and Collin (3), Andrew, together with his wife Angela (also a wildlife biologist), enjoys hunting with their two setters and one Labrador for grouse, woodcock and waterfowl. One of Andy's favourite quotes from the father of wildlife management, *Aldo Leopold*, when talking about grouse hunting, is "*There are two kinds of hunting: ordinary hunting, and ruffed grouse hunting*".

Upon his acceptance of his new post, Weik stated; "I'm really excited about working for the Ruffed Grouse Society. The organization was founded on the principle that sound scientific management is essential in today's landscape for thriving populations of grouse, woodcock and other wildlife. I look forward to building on the accomplishments of the other RGS biologists, raising awareness of the habitat needs of grouse, woodcock, and other wildlife that depend on young forest, helping incorporate successional forest habitat management in municipal, state, federal, corporate, and non-governmental organizations' management plans, incorporating wildlife habitat needs into the development of woody biomass technology to help meet our energy and wildlife habitat needs, and working with landowners and RGS chapters on habitat improvement projects".

---

**Established in 1961, the Ruffed Grouse Society is the one international wildlife conservation organization dedicated to promoting conditions suitable for ruffed grouse, American woodcock and related wildlife to sustain our sport hunting tradition and outdoor heritage.**



50 Years of  
Managing Forest Habitat

RUFFED  
GROUSE SOCIETY  
Of  
CANADA

---

The distinctive drumming of the **ruffed grouse** is music to the ears of avid bird hunters and wildlife enthusiasts alike. It is, however, a sound heard in fewer and fewer locations as suburban sprawl, expanding agriculture and commercial development rob this elusive game bird of habitat. As man builds to accommodate the expansion of his own race, the habitat of the ruffed grouse, American woodcock and other forest wildlife is seriously threatened.

Ruffed grouse are considered a "**bell weather species**" that reflects the overall health of the environment. We are searching for ways to assist the grouse, primarily by improving habitat. By improving habitat for ruffed grouse, we enhance food and cover for the hundreds of other game and non-game species of wildlife that share the grouse's forest home.

The chapters located across Canada are a vital link in our network and support of all concerned is needed. For nearly two decades, RGS has been actively establishing management projects throughout Canada.

Ensuring healthy woodlands and thriving populations of forest wildlife in the years to come is no easy task. To meet the challenges of today and tomorrow, we must promote initiatives that create healthy and diverse forests. The Ruffed Grouse Society concentrates exclusively on the creation and maintenance of young forest habitat.

Our Mission grows increasingly more important as young forests continue to be replaced by alternative land use and mono-cultures. Today far too little forest habitat is made up of young, vigorous growth where wildlife, such as the Ruffed Grouse, American Woodcock, Deer and many songbirds flourish.

---

## About The Woodcock

A small migratory bird, woodcock travel from breeding grounds across mid-Canada to its wintering grounds in the central United States. With a primary food source of earthworms, woodcock gradually work their way south as the ground freezes along its migration route.

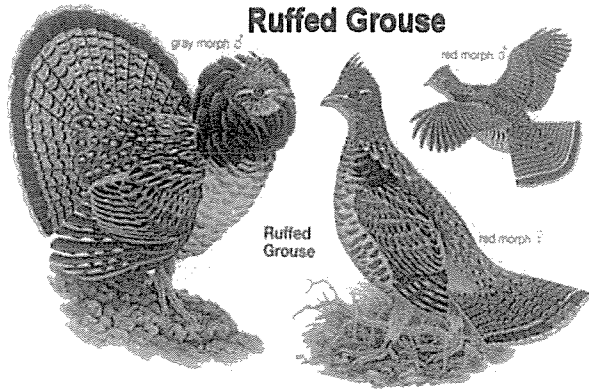
Woodcock are typically found in marshy, low-lying areas and along watercourses where the ground is rich in nutrients and full of earthworms. Habitat management for woodcock can be similar to that for grouse but the ground used is often lower and can be immediately adjacent to a marsh in the long grass where grouse aren't typically found.

This species of birds breeds on its route north in the spring. Open fields adjacent to prime feeding grounds are used as singing grounds for the males. The male tries to impress the female with aerial antics climbing and diving in flight. This can often be observed in open areas near dusk in the spring.

Scientists are somewhat concerned with present woodcock populations as they are on the decline. A definite cause of this hasn't been found, but hunting has been ruled out. Habitat loss is the prime suspect.



## Ruffed Grouse



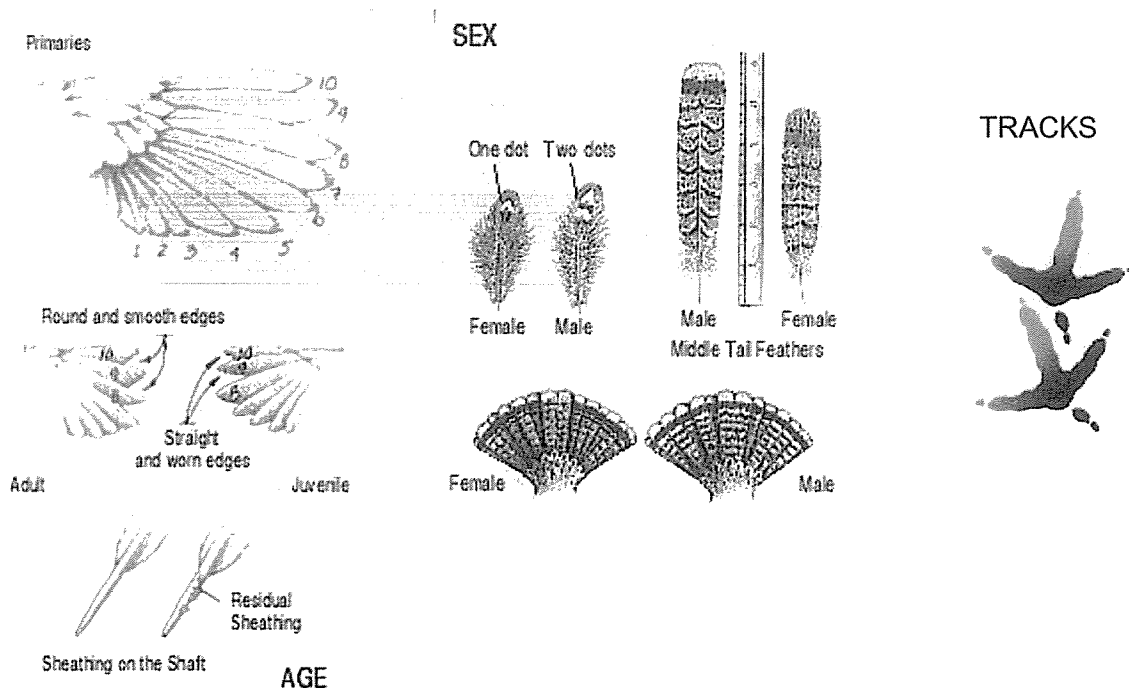
## About The Ruffed Grouse

The ruffed grouse is a forest dwelling bird which lives most of its life in the forest.

This bird, as hunters and nature lovers can attest, is unique in it changes from a "fool hen" in the north part of its range to a "thunderbird" farther south. Simply put, this means the birds often sit there and look at people from trees or on the ground in the north while they burst into the air at the slightest encroachment on their territory in the south.

Grouse are birds which thrive in habitat providing with a mixture of ground cover and evergreen trees to roost in. While they can be found at different times of the year in both areas, ground cover is essential for nesting and the evergreens to provide hiding from avian predators. Also necessary for grouse is a fallen down dead tree or log for the male to perform his drumming on in the spring. This is the thumping noise often heard echoing through the crisp air of a spring day. Some birds are also known to drum to a lesser extent in the fall.

View the following images to learn more about aging and sexing grouse.



## WEBSITE OF THE MONTH

[www.ruffedgrousesociety.org](http://www.ruffedgrousesociety.org)

[www.rgs.ca](http://www.rgs.ca) (Canadian Chapter site)

*"Dedicated to improving the forest and upland for songbirds, game birds and wildlife."*



WOODN'T YOU LIKE TO KNOW.....

Q. I see all these tracks in the snow and have difficulty trying to correctly ID them?

A. Well there is an app for that!

Visit [itunes.apple.com](https://itunes.apple.com):

Falcon Guides

Scats & Tracks for Great Lakes

Description:

FalconGuides' Scats and Tracks of the Great Lakes - A Field Guide to the Signs of 70 Wildlife Species

**TRACK PATTERN**

**LEGEND**  
F - front foot  
H - hind foot

**OTTER - 1 1/2"**

**MINK - 1"**      **WEASEL - 1/2" to 1"**

---

**Guide To Animal Tracks**

**WHITE-TAILED DEER**  
2 1/2" to 3"

**MOOSE**  
4 1/2" to 5 1/2"

**DOG - 2 1/4" to 4"**      **COYOTE**  
H - 2 1/4"      F - 2 1/2"

**RED FOX**      **GRAY FOX**  
H - 2"      F - 2"

**BOBCAT - 1 7/8"**      **LYNX**      **HOUSE CAT - 1 to 2"**  
H - 3"      F - 4 1/4"

**TRACK PATTERN**

**RACCOON**  
H - 4"      F - 2 1/2"

**STRIPED SKUNK**  
H - 2"      F - 2"

**Wildlife Conservation Begins With Conserving Habitat**

**BEAVER**  
H - 6"      F - 3"      T

**OPOSSUM**  
H - 2"      F - 1 1/4"      T

**WOODCHUCK**  
H - 2 1/4"      F - 2"

**MUSKRAT**  
H - 2 1/2"      F - 1 1/2"      T

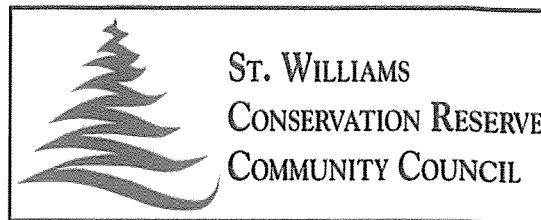
**SNOWSHOE HARE**  
H - 5"      F - 2"

**COTTONTAIL RABBIT**  
H - 3 1/2"      F - 1"

**GRAY SQUIRREL**      **WHITE-FOOTED MOUSE - 1/4" T**  
H - 2 1/4"      F - 1 1/2"

**CROW - 2 1/2"**      **TURKEY - 4"**      **RUFFED GROUSE - 2"**

The **St. Williams Conservation Reserve (SWCR)** consists of two tracts of Crown land in Norfolk County that were officially designated as a provincial Conservation Reserve in 2004. These tracts known as the Turkey Point & Nursery Tracts were recently dedicated as the White Forest & Zavitz Forest, respectively, in recognition of the key roles played by Dr. James H. White & Dr. Edmund J. Zavitz in reforesting these lands a century ago.



The St. Williams Conservation Reserve Community Council (SWCRCC) is a volunteer group that works closely with the Ministry of Natural Resources to ensure that community values are represented during the SWCR management planning process. The Community Council plays a lead role in the implementation of the Operations Plan for the 1,034 hectare Conservation Reserve.

The SWCR is one of the largest blocks of forest in southwestern Ontario & is recognized regionally, provincially & nationally for its exceptional biodiversity & natural heritage values. Its diverse habitats support significant populations of rare & endangered plants & animals such as Eastern Flowering Dogwood, Hooded Warbler, & Eastern Hog-nosed Snake. "We arguably have among the highest number of species at risk in all of Canada", said Mark Sommerville, Past-Chair of the Community Council. "Our challenge is to balance the recreational needs of our community with the conservation & restoration of important native habitat".

Since 2009, the volunteers on the SWCRCC have successfully raised more than \$230,000 for the management of the Conservation Reserve & the protection of habitat for the many Species at Risk found here.

Recent activities carried out under the leadership of the SWCRCC include:

- Surveys of the plants & birds found within the SWCR, including Species At Risk;
- Planning & implementing vegetation management to restore native oak savannah & Carolinian forest habitats.
- Establishment of an extensive trail network including signed multi-purpose trails that can be used for ATVs, horseback riding, & mountain biking without damaging sensitive habitats, & additional passive-use trails that can be used for hiking, cross-country skiing & dog-walking;
- Development of a website, educational brochures, & interpretive kiosks; &
- Organizing Annual Open Houses & Community Work Days;

The public is encouraged to discover the Conservation Reserve by exploring the extensive trail system in all seasons. Volunteers are needed to monitor trail conditions, help with Community Work Days, & serve on the board of directors. Members of the community with an interest in joining the SWCR Community Council or volunteering in another capacity can contact the Community Council by email at [info@swcr.ca](mailto:info@swcr.ca).

---

## ST. WILLIAMS CONSERVATION RESERVE COMMUNITY COUNCIL

SEEKS VOLUNTEER COUNCIL DIRECTORS WITH EXPERTISE IN SUCH AREAS AS:

- |  |  |   |
|--|--|---|
| <input type="checkbox"/> Resource Management | <input type="checkbox"/> Marketing and Promotion | <input type="checkbox"/> Business Management    |
| <input type="checkbox"/> Outdoor Recreation  | <input type="checkbox"/> Fund Raising            | <input type="checkbox"/> Ecological Restoration |

The St. Williams Conservation Reserve Community Council is a community-based organization that plays an integral role in the management of the Conservation Reserve in partnership with the Ministry of Natural Resources. The Reserve is a 1035 hectare area of Crown Land located in Norfolk County. It is comprised of two separate forests, the Nursery Tract at St. Williams (the J. E. Zavitz Forest) and the Nursery Tract at Turkey Point (the J. H. White Forest).

Persons interested in applying for the position of director in the St. Williams Conservation Reserve Community Council are required to complete and submit an application form which is available on the website at [www.swcr.ca](http://www.swcr.ca) to:

**Mr. Mark Sommerville**  
**Chair of the Recruitment Committee ~ St. Williams Conservation Reserve Community Council**  
**P. O. Box 472 Port Rowan, ON N0E 1M0**